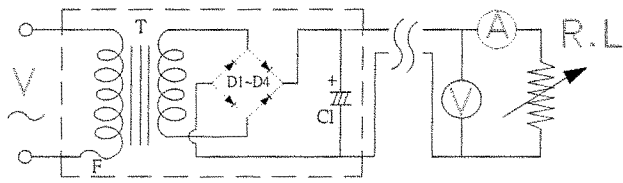
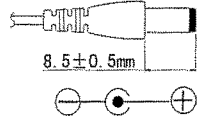
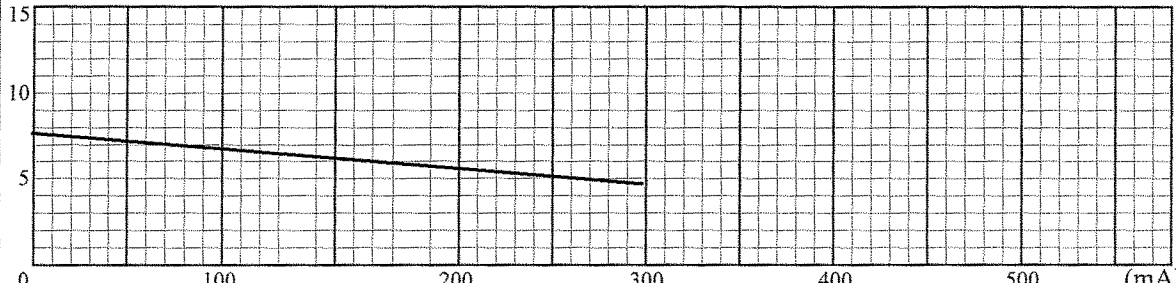
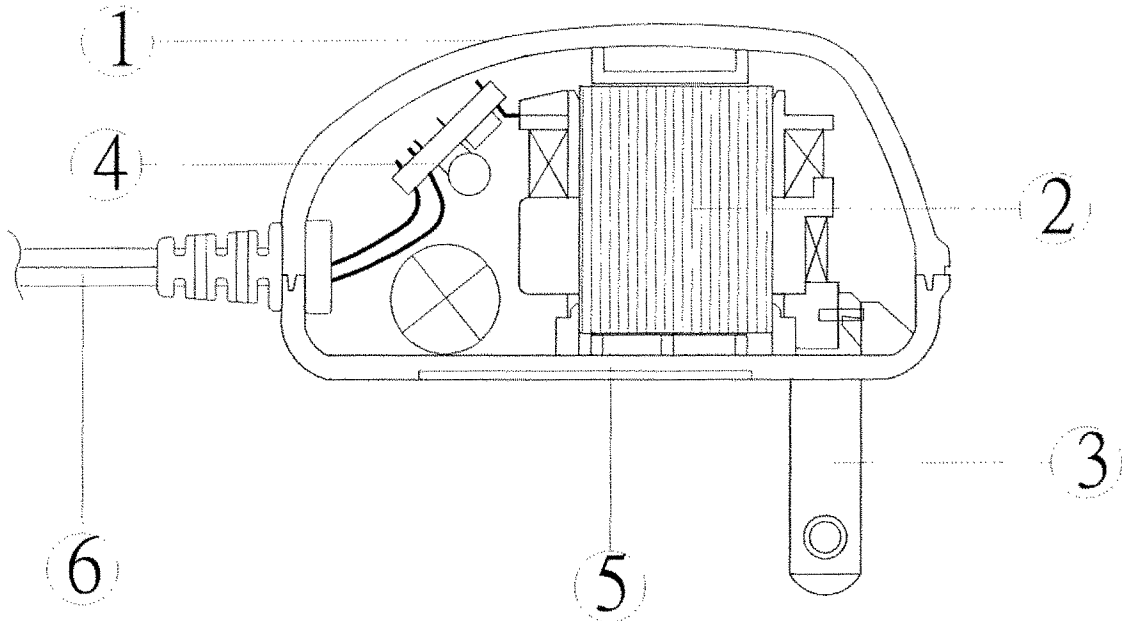


TEST DATA

ITEM	SPEC	SAMPLE									
		1	2	3	4	5	6	7	8	9	10
Primary Exciting Current Input 120VAC , 60 Hz	40 mA max	21	22	20							
Primary Load Current Input 120VAC , 60 Hz	55 mA max	32	33	32							
Secondary No Load DC Voltage	7.8V ±0.5V	7.57	7.47	7.44							
Secondary DC Voltage Load 300 mA	4.5V ±0.5V	4.43	4.42	4.47							
Secondary Voltage Load mA	V ± %										
Secondary Voltage Load mA	V ± %										
Secondary Voltage Load mA	V ± %										
Secondary Voltage Load mA	V ± %										
Ripple Voltage Load 300 mA (PK-PK)	2V max	1.2	1.2	1.2							
Hi-Pot Test 3 mA for 3Sec.	Pri. to Sec.	2K VAC	OK	OK	OK						
	Pri. to Core	2K VAC	OK	OK	OK						
	Sec. to Core	1.5K VAC	OK	OK	OK						
Temperature Rise: 70°C MAX measured By Resistance Method (Primary Winding)											
Core Film: SPLIT						Core : EI-28					
Testing Circuit: 1000uF/10V						Output Plug Drawing: PLUG:3.5*1.35mm					
											
Output conductor length:		6FT min (AWG#24)									
Input conductor length:		ft min (AWG#)									
(V) Characteristic Curve											
											

DC Adaptor Specifications

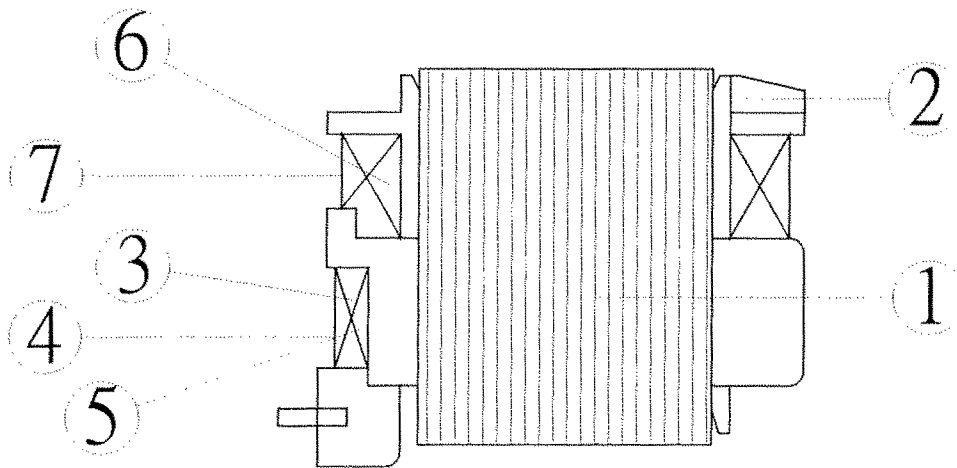
Internal Construction Drawing and Parts List (Unit: Set or EA)



Part Name	Specification	Q'ty
1. Enclosure	Noryl SE1 94V-0 105°C	
	Noryl SE-100 94V-0 95°C	
	Noryl PX1700 94V-0 95°C	
	940(f1) 94V-0 130°C	
2. Transformer	EI-28	1
3. Blade	Ni plated brass	2
4. Print Wiring Board Assembly		
Print Wiring Board	04V0 94V-0 130°C	1
	11 94V-0 105°C	
	13 94V-0 130°C	
	BF-3 94V-0 130°C	
Diode	1A 400-700V IN4004-IN4007	4
Capacitor	1000uf 10V 85°C	1
5. Name Plate	Polyester Film	1
6. Output Cord	AWG# 24 6FT min	1

DC Adaptor Specifications

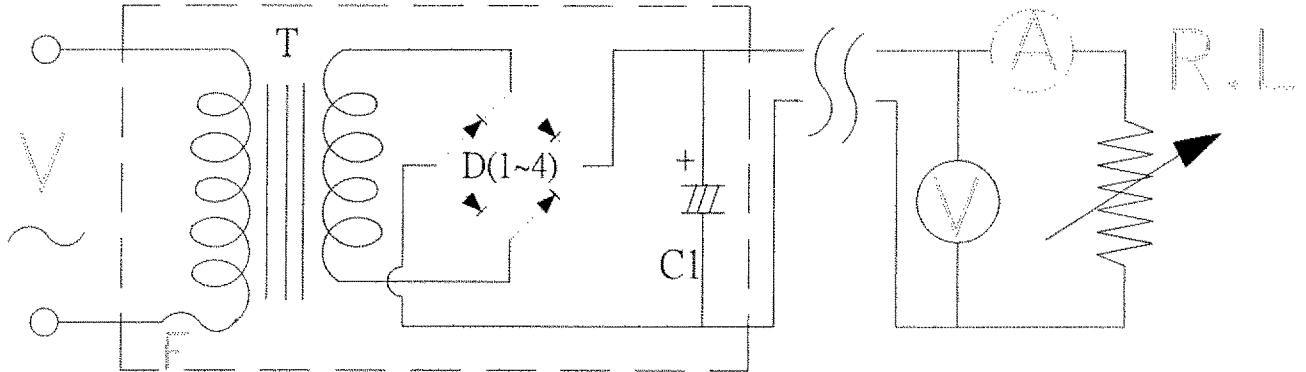
Construction Drawing and Details of Transformer



Part Name	Material & Type	Spec or Q'ty
1. Core	Silicon Steel	0.5mm
2. Bobbin	Polybutylene Terephthalate I403G6	0.71mm
	PETP(QMFZ2) FR-530, FR530L	
	Nylon 101L	
3. Primary Winding	Polyurethane Enameled Copper wire	mm turn ohm
4. Primary Outer Winding	Mylar Tape	0.025mmx2T
5. Thermal Fuse	A3 125°C 2A 250VAC	1PCS
	K3 125°C 2A 250VAC	
	M30 125°C 2A 250VAC	
6. Secondary Winding	Polyurethane Enameled Copper Wire	mm turn ohm
7. Secondary Outer Winding	Mylar Tape	0.025mmx2T

DC Adaptor Specifications

Circuit Diagram



Symbol	Part Name	Note
T	Transformer	EI-28
D(1~4)	Diode	1A 400-700V IN4004-IN4007
C1	Capacitor	1000uF 10V 85°C
F	Thermal	125°C 2A 250V



CUI INC

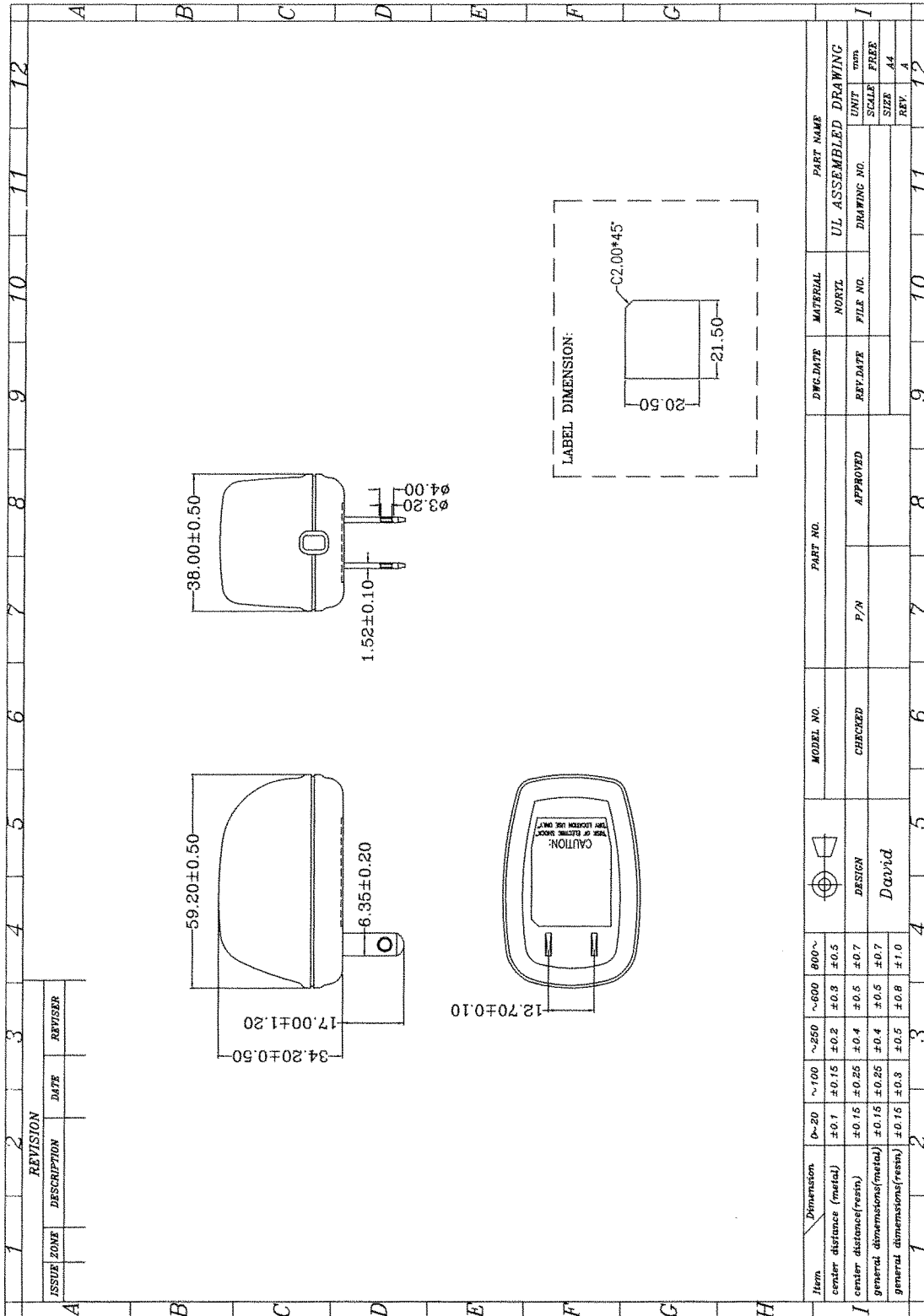
Part No: DPD045030-P7P-TK

Date: 8/3/04

Unit: mm

Description: Power Supply

Page No: 5 of 6



REVISION	DESCRIPTION	DATE	REVISOR

Item	Dimension	0-20	~100	~250	~500	800~	MODEL NO.	PART NO.	DATE	PART NAME
center distance (metal)		±0.15	±0.15	±0.2	±0.3	±0.5				
center distance (resin)		±0.15	±0.25	±0.4	±0.5	±0.7				
general dimensions (metal)		±0.15	±0.25	±0.4	±0.5	±0.7				
general dimensions (resin)		±0.15	±0.3	±0.5	±0.8	±1.0				

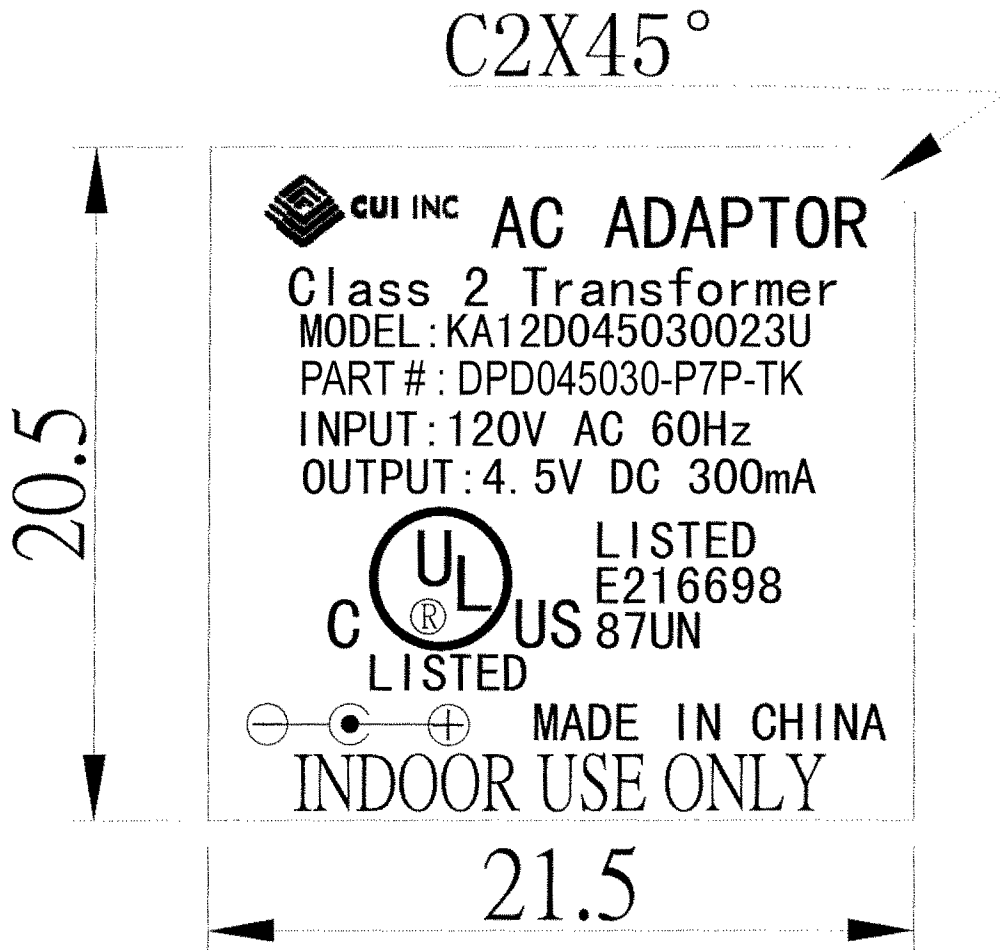
DESIGN	APPROVED	FILE NO.	SCALE	UNIT
David			A4	mm

REV.	REV. DATE	REV. DATE	DRAWING NO.	PART NAME
1				
2				
3				
4				
5				
6				
7				
8				
9				
10				
11				
12				

All information contained herein applies only to the above listed part number. Other versions of this part number with electrical or mechanical variations are available. Contact CUI Inc. for further assistance.

DC Adaptor Specifications

Dimension of Nameplate (Unit:mm)



Material: Polyester Film

T: 0.25mm